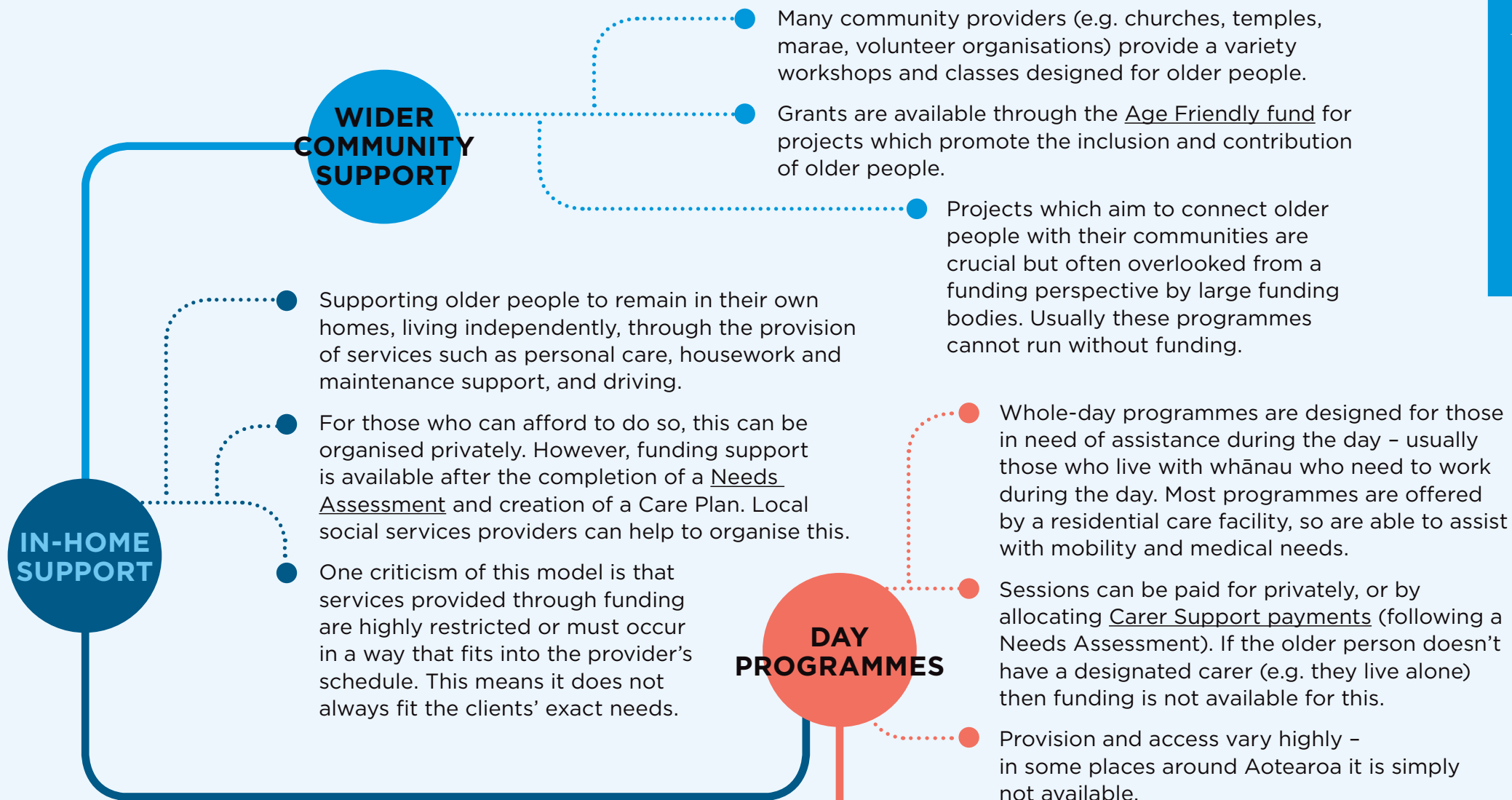


The Aged Care Continuum

Aged care in Aotearoa exists across a continuum from least to most intensive levels of involvement of third parties. Some people will follow this continuum all the way along, while others will jump steps, depending on their circumstances. This can be difficult to navigate as each step is managed, funded, and staffed by different agencies, government departments, and organisations.



RETIREMENT VILLAGE LIVING

Specialty built communities designed with features to meet the needs of an older population, but for individuals who are still fully independent and do not need assistance with daily tasks or personal care.

Some social housing providers also manage senior-specific rental opportunities.

Often a lifestyle decision as opposed to a medical decision.

Works through the purchase of an Occupational Rights Agreement (ORA) in the village, which must be entirely self-funded, with no subsidy available so is not accessed through a needs assessment. As an ORA costs around the same as a house, this option is realistically only available to people who are able to sell their current home or have other sources of wealth.

It's important for anyone considering this option to fully understand how the retirement village model works and how it differs to purchasing a home.

Overnight care either in a facility or at home for older people with high care needs. It's designed to give carers a short break or time to deal with other obligations outside the home. There is a noticeable shortage in beds which makes it difficult to book.

Can be privately funded, but funding may be available through a Needs Assessment, specifically through the allocation of Carer Support payments.

RESPIRE CARE

SUPPORTED LIVING

Specialist units within a residential facility that provides support, including cooking and cleaning, to ensure mostly independent living. A hybrid step between in-home support and residential care.

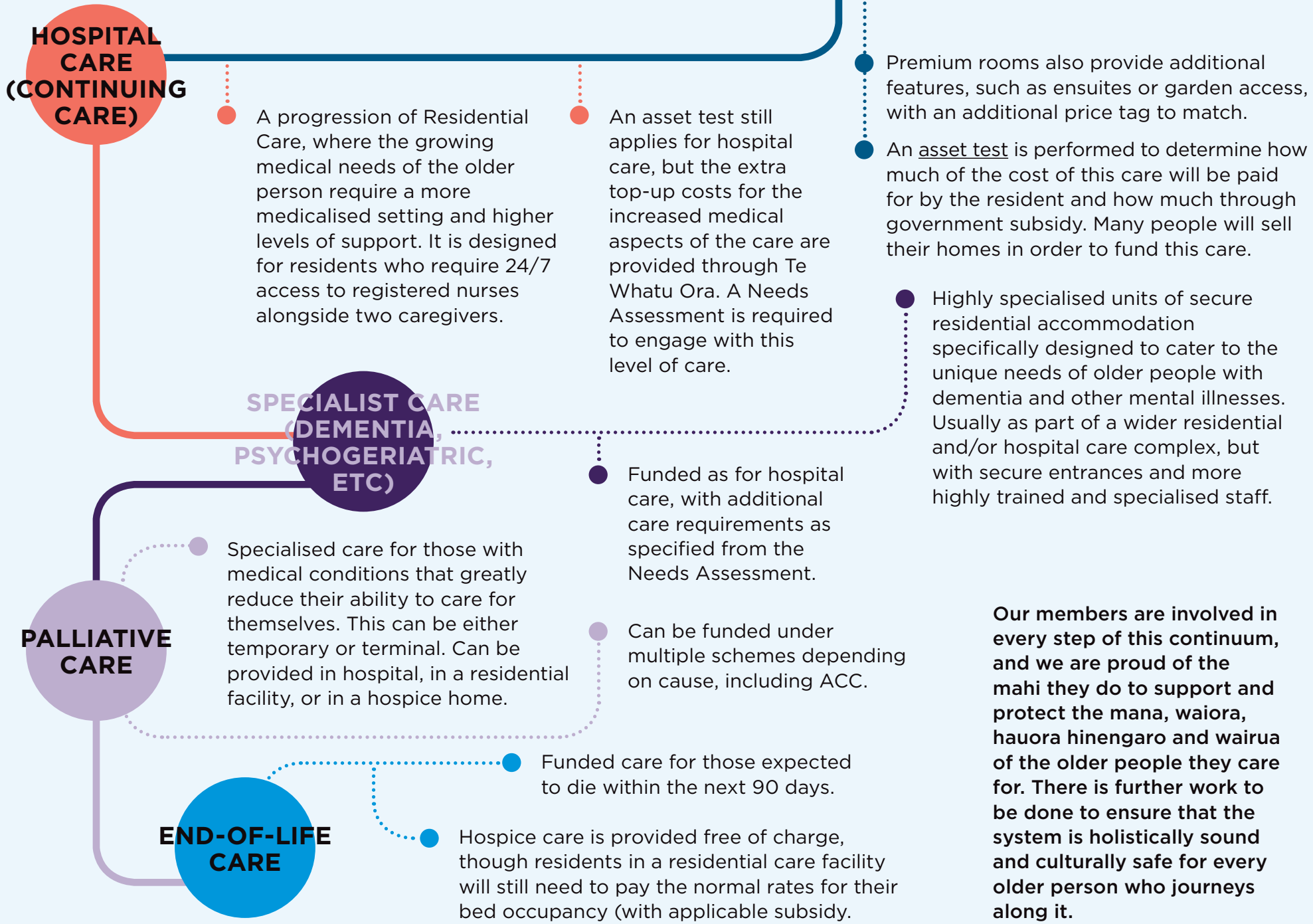
Usually funded through the transfer of occupancy rights from retirement village living, with additional costs surrounding the provision of additional services. People not previously in a retirement village would need to purchase an ORA, so this option is another one not available to those without their own home to sell or other significant wealth.

RESIDENTIAL CARE

Specially built and staffed accommodation for those who require higher levels of care (determined through a Needs Assessment).

Dependent on the resident's financial situation and whether they would like additional features such as an ensuite or garden access, this care can be fully funded through government subsidy or be entirely paid for by the older person.

Both standard and premium rooms must meet lifestyle, health professional and accommodation standards that enable the health and wellbeing of residents.



Our members are involved in every step of this continuum, and we are proud of the mahi they do to support and protect the mana, waiora, hauora hinengaro and wairua of the older people they care for. There is further work to be done to ensure that the system is holistically sound and culturally safe for every older person who journeys along it.